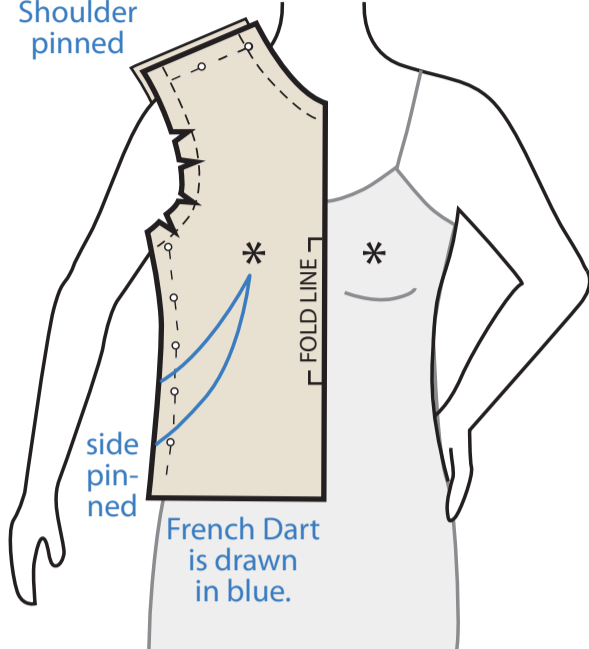


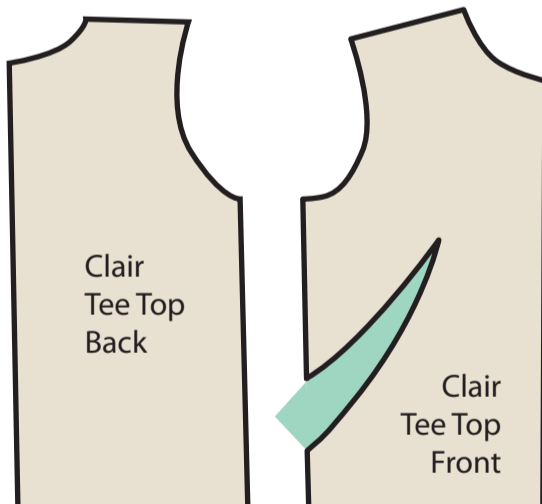
Claire Tee Top  
Front Pattern Piece



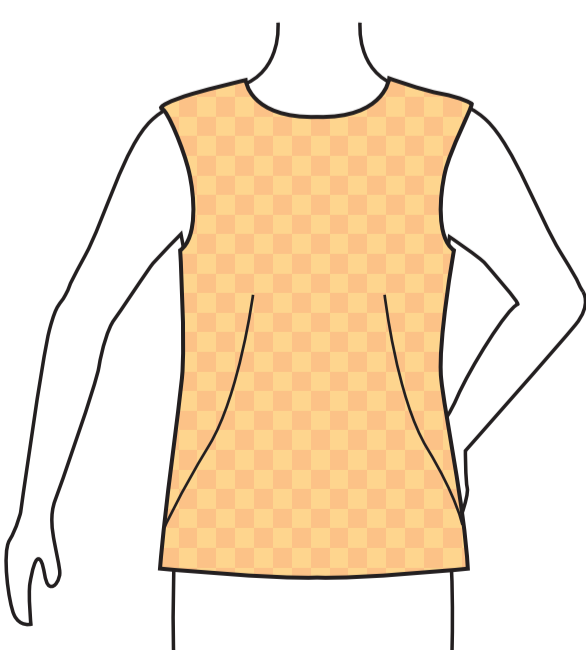
Draw in a curved dart (French Dart) on the pattern front then pin the pattern front to the pattern back at the shoulders and side seam. Use this as a quick check to see if you are close to a fit.



Choose a similar fabric to the primary fabric to create the try-on (muslin) and baste (5.0 stitch length) the try-on's shoulders, darts, and side seams. Adjust the dart for your fit if need be. The point of the dart should be just under the bust.



Transfer your fabric dart to your pattern, fill the gap with tissue paper, and adjust the side seam and hem to match to the Tee Top Back pattern piece.



Finished top.